



FEBRUARY 2019

The Royal British Legion Isle of Man County

Award - The Port St Mary District were delighted to receive the Ian Cannell Trophy, which is a County Award from the Royal British Legion Isle of Man. This award was due to the district having the highest increase in collections for the 2018 Poppy Appeal – well done PSM! The village raised an impressive £2,341.02.



Youth Councils - The Board are currently working with Castle Rushen High School and King Williams College to increase the interest in local politics through Youth Councils, the elected members will then attend public forums and the public section of the meetings with a view to providing feedback to the Board.

Charities supported through donations - Charity donations made at the Celebration of Christmas were split between the Food Bank and Housing Matters, we are pleased to report that £95.65 was raised for each organisation. The Christmas Market also had a collection point in support of the Red Box Project and raised a further £78.37.



Christmas Colouring Competition Winners

Charlie Valerga and Charlie Shaw (both aged 7) were the very lucky winners of the Christmas colouring competition and as a result, turned on the Christmas tree lights at Manxonia House – thank you boys!

Dog Campaign – Various measures to assist in eliminating dog fouling in the village are currently being explored through a number of avenues.

The Hub – Situated in Thie Rosien on Castletown Road, the Hub is a warm and welcoming place to learn new skills, share some of yours, meet friends over fabulous fair trade, organic coffee, homemade cakes, borrow a book, learn to meditate, learn the ancient game of mahjong, keep your brain active with friendly bridge, learn to jog and keep fit, discover your inner and outer creativity or just sit and read the paper. Contact Janet Bridle on 838180 or email admin@hubclubsci.im for further information.

Cafe Connect at PSM Pavilion - for anyone who fancies a little company, coffee, cake or a chat! Open to all every Monday 10am-4pm with papers, board games and a warm welcome waiting for you.

PROJECTS UPDATE

Manxonia House – Manxonia House is currently on the market for £295,000 and there have been several viewings to date.

Highways – The plans to resurface the road along Primrose Terrace have been postponed until 2020/21, the Board have written to the Department to express their concern and disappointment in the delay. Correspondence is also ongoing with the Department in relation to other areas of concern around the village.

Skate Park – Sound tests are currently being organised for two locations, a planning application will then be submitted in support of the location with the quietest results.

Date for your Diary – 13th February public forum 7-7.25pm West Room

PORT ST MARY COMMISSIONERS UPCOMING EVENTS

A Day in the Life Exhibition - Year of Our Island funding has been gratefully secured to assist with the printing costs of the pictures taken for the Day in the Life project. An exhibition will be held in the Town Hall on the 9th & 10th March to display the pictures old and new. Posters and further information will be released shortly.

Mona’s Queen Memorial - The annual Mona’s Queen memorial service will be held at Kallow Point on Wednesday, 29th May, further information will be available nearer the time.

Rushen Silver Band Concert - A summer concert will be hosted at Happy Valley on 14th July at 3pm, posters will be in circulation nearer the time.



*Thank you to all who came
and supported the events held
last year!*

PSM COMMUNITY EVENTS TEAM UPCOMING EVENTS



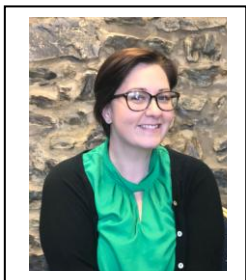
For the return of BEACH DAY!

Saturday 24th August



Easter Egg Hunt to be held around the village on Saturday 20th April

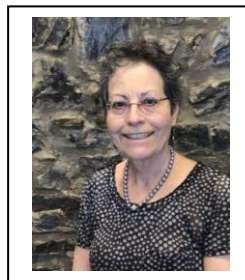
Meet Your PSM Team:



Hayley Fargher
Clerk



Darleen Greenwood
Housing Officer



Robina Watson
Finance Officer



Margaret Davies
Admin Assistant



Tom Brown
Foreman



Martin Booth
Direct Labour
Operative



Michael Kinvig
Direct Labour
Operative



Shay Pemberton
Direct Labour
Operative



Tom Scott
Direct Labour
Operative



Matthew Shaw
Direct Labour
Operative